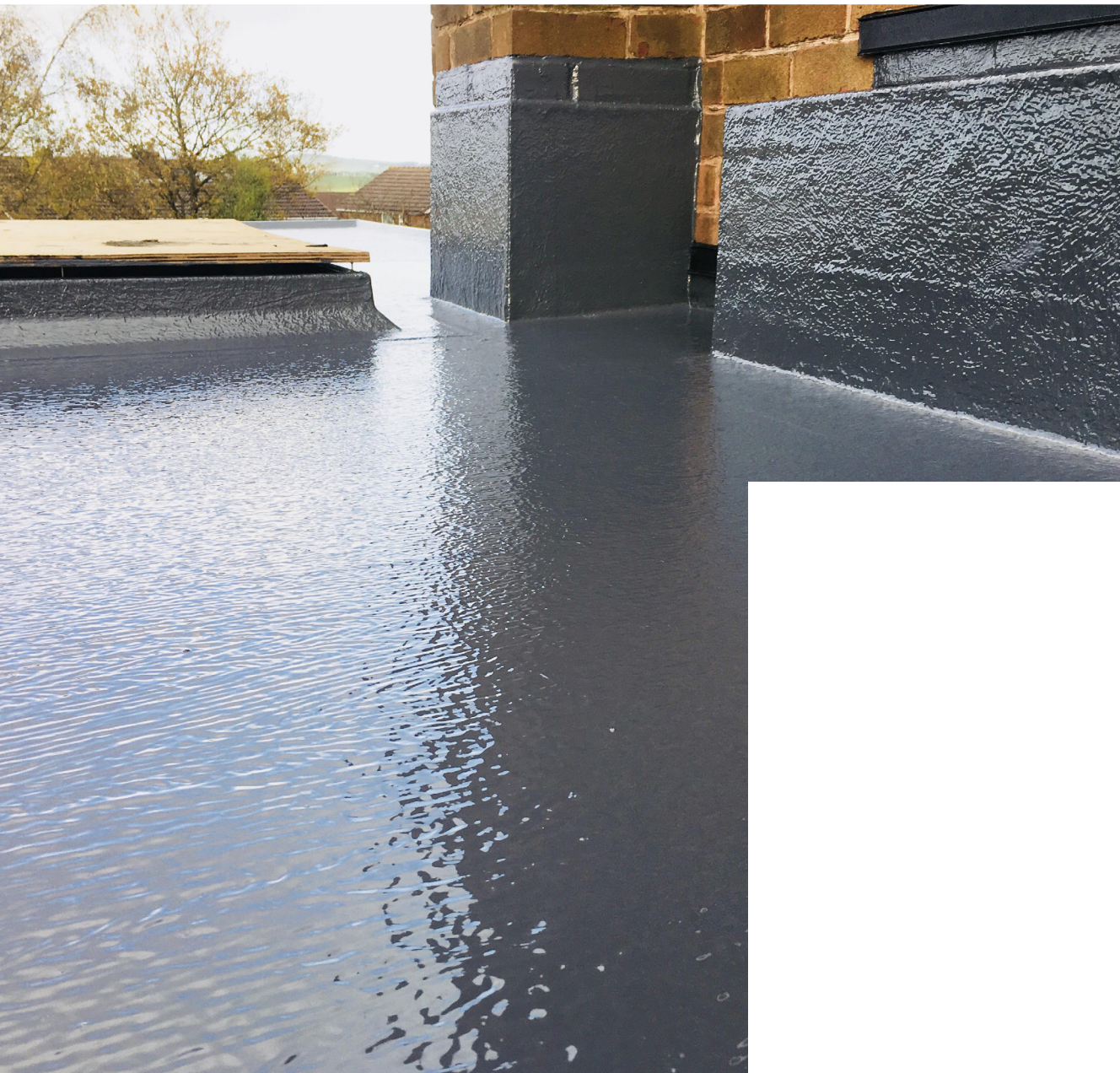


Bailey

Bailey Sure-Coat Flexible
Polymer Roofing System

Quick cure liquid
membrane roofing system



Key benefits

The system is applied by brush or roller at a coverage rate of 1.4 - 2kg per square meter*. The base coat is embedded with 225gsm fibreglass matting. The topcoat is then applied on top of the embedded matting. Please get in touch for further detailed application guidelines and application rates.

Cold applied and quick curing, the Bailey Sure-Coat high performance liquid polymer membrane for flat roofing applications.

It cures to form a seamless waterproof membrane which does not require any additional surface coatings (walkways or protection coats may be applied if desired).



Benefits and features

- Fast and efficient – 30-60 minutes cure time
- Cost effective – great value for money
- Year-round application due to flexibility of catalyst and additional activators and inhibitors
- Non-slip - comes with additional granule walkway finishes
- Detailing - brilliant for application around difficult details
- Single resin – no need to stock separate base and top coat
- Low odour – reduced styrene emissions
- Versatile - can be applied to new build projects and over most refurbishment substrates / existing waterproofing



20 year warranty
The Bailey Sure-Coat system is supported by our 20-year warranty*

Uses and boundaries

Suitable for both new construction and refurbishment projects, the Bailey Sure-Coat is tailored for use as a cap sheet in a cold applied roof overlay system, or as a cold applied cap sheet in a traditional built-up roofing system. This system can also be used for podium decks and as a detailing product to complement other roofing systems.

Warranty

20-year warranty - the Bailey Sure-Coat system is supported by our 20-year warranty*

Storage

Store in a clean, dry, and covered area between temperatures of 5 and 25°C. Do not expose to freezing temperatures or excessive temperature changes.

System Performance Data

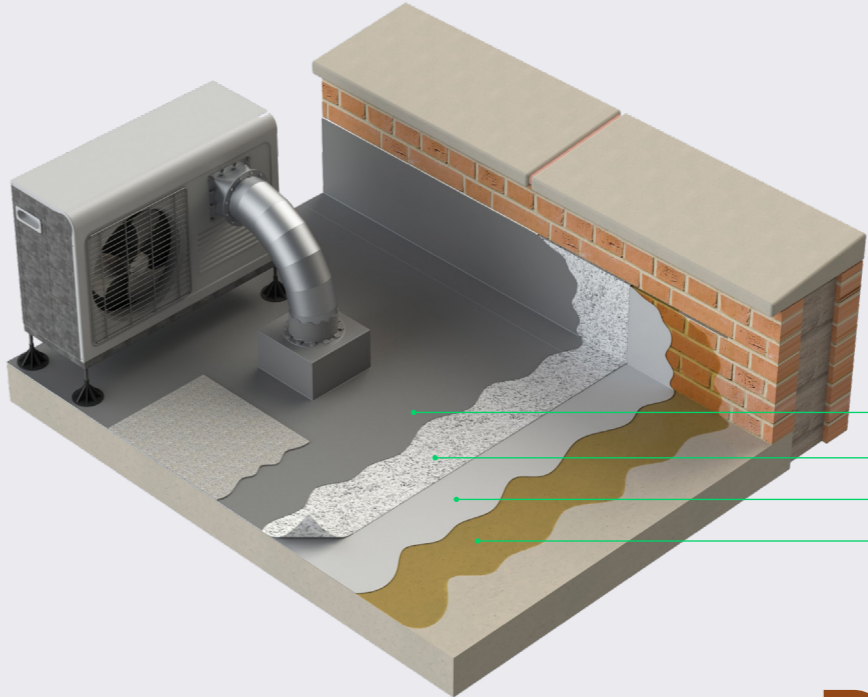
Shore hardness	40-60 SD
Service temperature	5-30°C
Tensile strength (non-reinforced membrane)	5 MPa
Tensile strength (reinforced membrane)	27 MPa
Elongation (non-reinforced membrane)	22%
Elongation (reinforced membrane)	2%

Membrane Cure Time

30-60 minutes	5-30°C
---------------	--------

Product Data

Litres	14.2L
Colour	Dark grey
Flash point	32°C
Solids content	90%
Density	1.4g/cm ²
Shelf life	1 year



Bailey Sure-Coat layer build-up
Bailey Sure-Coat topcoat
Bailey reinforcement layer
Bailey Sure-Coat basecoat
Bailey Sure-Coat primer

Broof(t4)

Achieved Fire Certification in accordance with BS EN 13501-5 * 2005

*Terms and conditions apply

W
E
R
E
Y

Tel: +44 800 849 8558
roof@builtwithbailey.com
builtwithbailey.com